



*Silvia Musci*

**ANTHROPOLOGY AND SIMULATION  
EDUCATION IN NURSING**

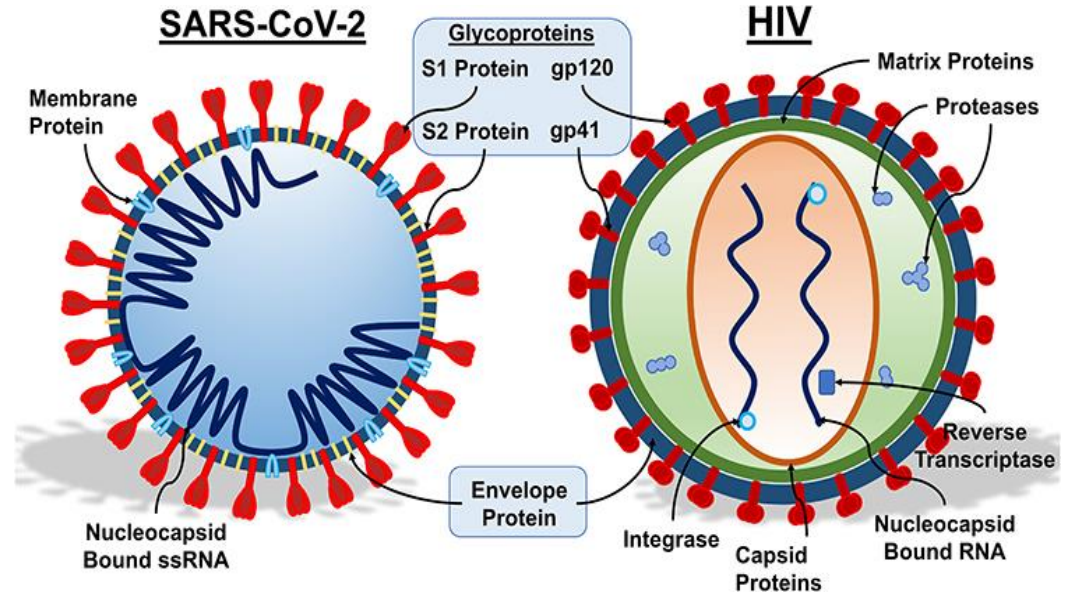
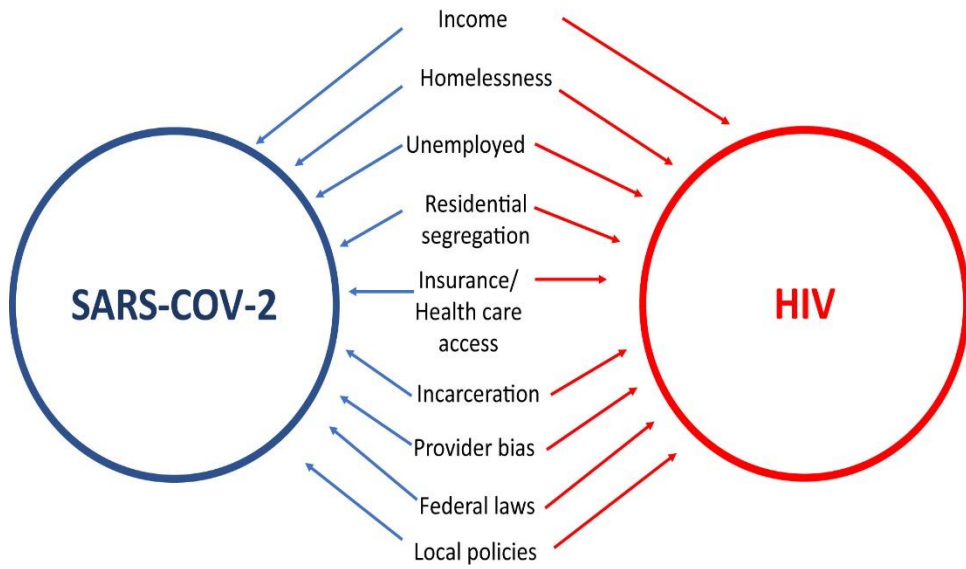
**PhD Program in Cultural and Social  
Anthropology – University Milan Bicocca**





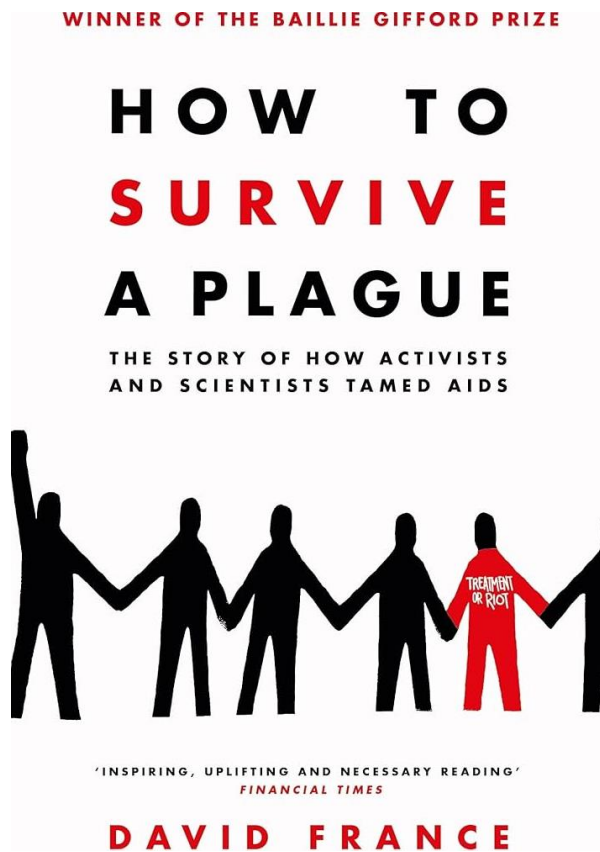
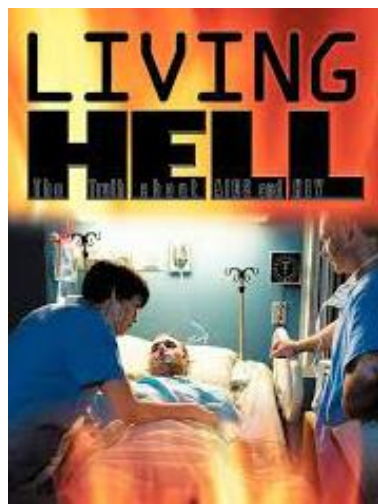


**STRUCTURAL RACISM PATHWAYS**



***Generational change,  
growth of the Nursing profession***









# WORLD ANTHROPOLOGY DAY 2020

ANTROPOLOGIA  
PUBBLICA A MILANO  
20 e 22 FEBBRAIO



*No one would have thought what was about to happen to ours world....*

*On a quiet winter day....Began the 20/02/2020 Anthropology days in the University...but the beginning of change in the world...and in Lombard ERs...the first patient in Codogno!*



#fightingcovid19chapter2



***Besides the staff, there was not enough space, the beds, to accommodate the patients properly***

*Our world changes in a few days from emergency rooms we find ourselves stemming waves of shock room patients... we transform from sub-intensive .... to intensive care...beds are no longer enough....March 2020*





# SILVIA MUSCI, ITALY

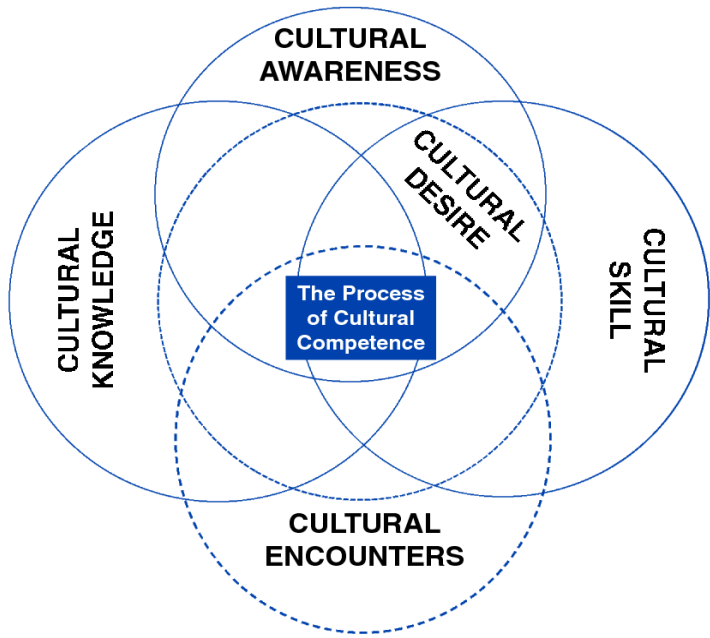


Being an Emergency and Urgency Nurse has always been an honor but in this time of Covid it is even more! Here in Milan we were strong and we won this time too and now that the adrenaline has gone down, we share the passion and strong emotions of those days that we hope will never return ... but if it were not so ... I... we are ready, never give up!! ♥???

Share on:   







***Generational change,  
growth of the Nursing  
profession***



Copyright © Campinha-Bacote, 1998. Printed with permission from Transculture A.R.E. Associates.



**Yesterday**



**Today**



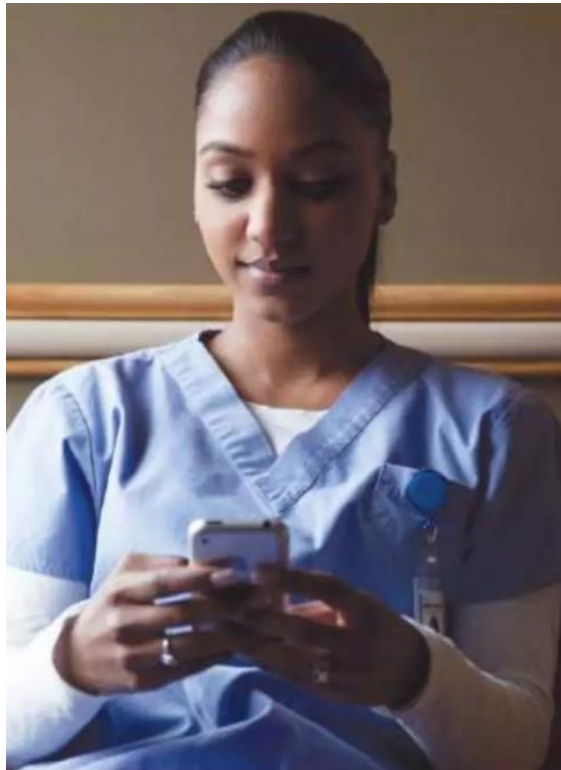




***Generational change,  
growth of the Nursing  
profession***







**ESN**  
EUROPEAN SPECIALIST  
NURSES ORGANISATION



 **siiet**.org | società italiana  
infermieri emergenza

UNIVERSITÀ DEGLI STUDI DI MILANO  
**BICOCCA**



NCSBN (2011) A Nurse's Guide to Professional Boundaries







**ESN**   
EUROPEAN SPECIALIST  
NURSES ORGANISATION

# Which body? feticci

 **siiet** | società italiana  
infermieri emergenza

UNIVERSITÀ DEGLI STUDI  
DI MILANO  
**BICOCCA**

Simulation with mannequins increasingly resembling reality....







**ESN**   
EUROPEAN SPECIALIST  
NURSES ORGANISATION

**THE BODY OF THE CAREGIVER  
BECOMES AN INSTRUMENT  
OF SIMULATION**



 **siiet** | società italiana  
infermieri emergenza

UNIVERSITÀ DEGLI STUDI  
DI MILANO  
**BICOCCA**







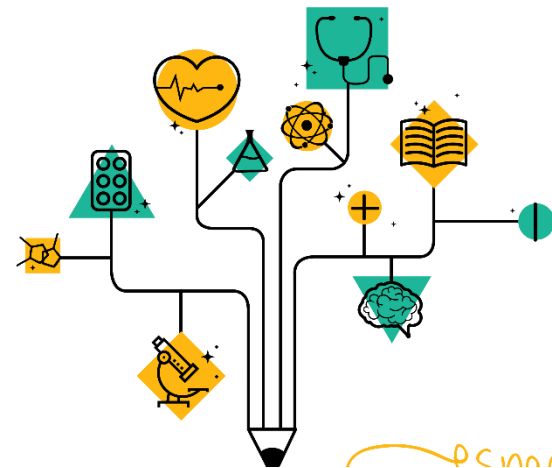




the people culture anthropology  
 humanity different world  
 teaching defining snapes  
 nationality colour



**siiet**.org | società italiana infermieri emergenza



**WHY**  
 STORYTELLING  
 MATTERS

*especially in healthcare.*



EUROPEAN SPECIALIST NURSES ORGANISATION



**Qualitativa**  
 Fenomenologia  
 Grounded Theory  
 Focus Group  
 Questionario  
 Intervista  
 Etnografia  
 Metasintesi Qualitativa



Thanks  
Grazie



**ESN**   
EUROPEAN SPECIALIST  
NURSES ORGANISATION

 **siiet** | società italiana  
.org | **infermieri** emergenza

UNIVERSITÀ DEGLI STUDI  
DI MILANO  
**BICOCCA**