



NURSE SPECIALIST IN FOLLOW-UP SERVICE OF ICU SURVIVORS AFTER CRITICAL ILLNESS

ESNO CONGRESS 2024

**"THE SPECIALIST NURSE IN EUROPEAN HEALTHCARE TOWARDS 2030"
5-7 JUNE 2024, MILAN, ITALY**

Francesco Gravante, Rn, Msn, PhD Student University of Rome "Tor Vergata" Department of Biomedicine and Prevention Rome RM Italy
e-mail: francesco.gravante@students.uniroma2.it



Research Group

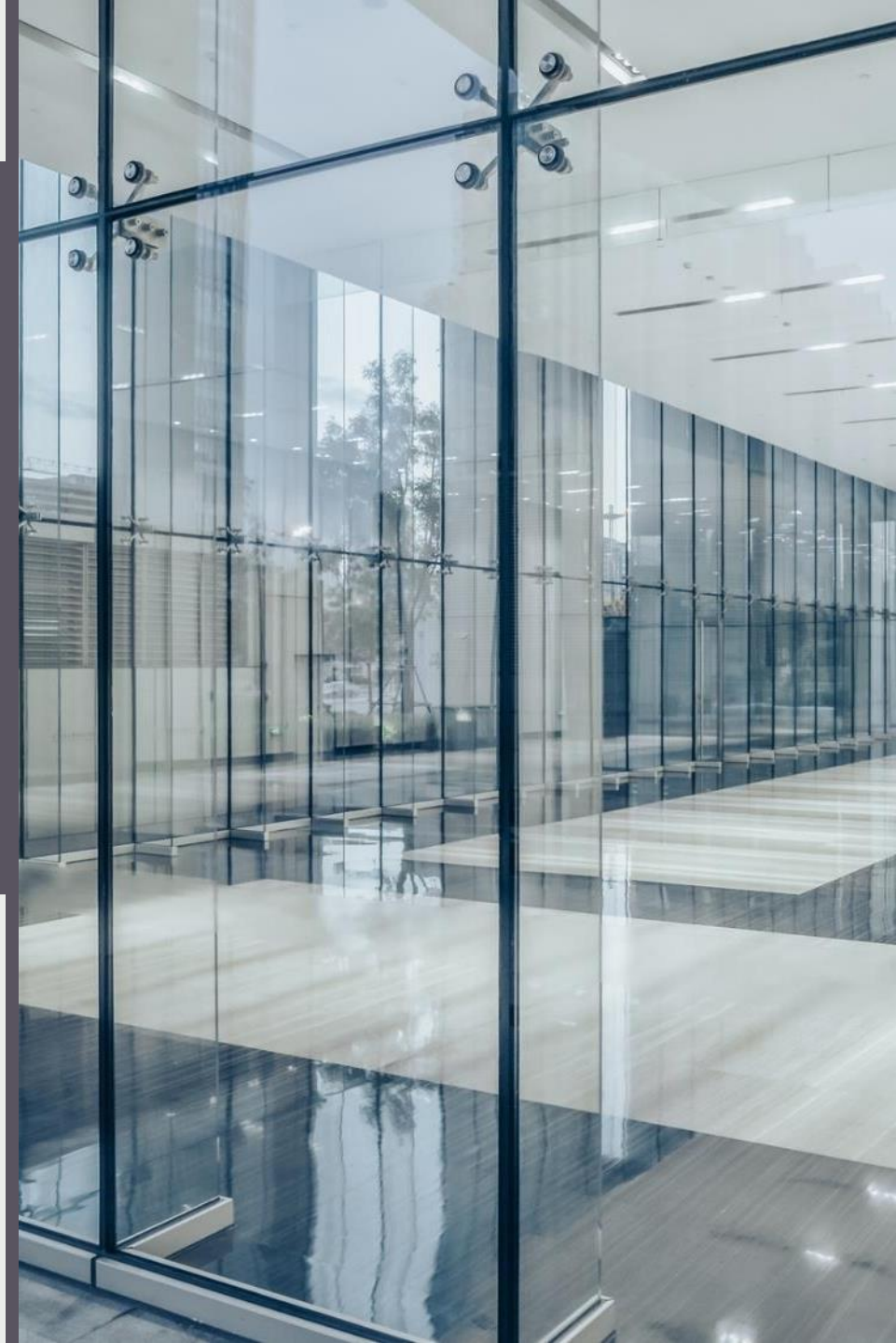
Francesco Gravante ¹, Francesca Trotta ¹, Beatrice Meucci ¹, Silvio Simeone ², Ercole Vellone¹, Rosaria Alvaro¹, Gianluca Pucciarelli¹

¹ university of Rome "Tor Vergata" Department of Biomedicine and Prevention Rome RM Italy,

² Department of clinical and experimental medicine, university of Catanzaro Magna Grecia, Catanzaro, Italy

DISCLOSURE

No conflict of Interest





Follow- Service After Critical Illness

Intensive Care Unit survivors have to deal with a different version of themselves after the ICU discharge.

These conditions were characterised by all three adverse survivorship dimensions of physical function, cognitive function and mental health status.

PICS was associated with poor quality of life in ICU survivors and is explained predominantly by the mental component.

The mental components of PICS, such as anxiety, depression and PTSD, adversely impact ICU survivors after discharge.

Received: 2 June 2023 | Revised: 25 March 2024 | Accepted: 27 March 2024
DOI: 10.1111/nicc.13077

SYSTEMATIC REVIEW **BACIN** Nursing in Critical Care WILEY

Quality of life in ICU survivors and their relatives with post-intensive care syndrome: A systematic review

Francesco Gravante¹ | Francesca Trotta¹ | Salvatore Latina¹ |
Silvio Simeone PhD² | Rosaria Alvaro MSN, FAAN, FESC¹ |
Ercole Vellone PhD, FAAN, FESC¹ | Gianluca Pucciarelli PhD, FAHA¹



POST INTENSIVE CARE SYNDROME

AIM

This review aimed to describe the role of a nurse specialist in the follow-up service of ICU survivors after critical illness.



METHODS

PICO MODEL

P

•PATIENT AFTER CRITICAL ILLNESS

I

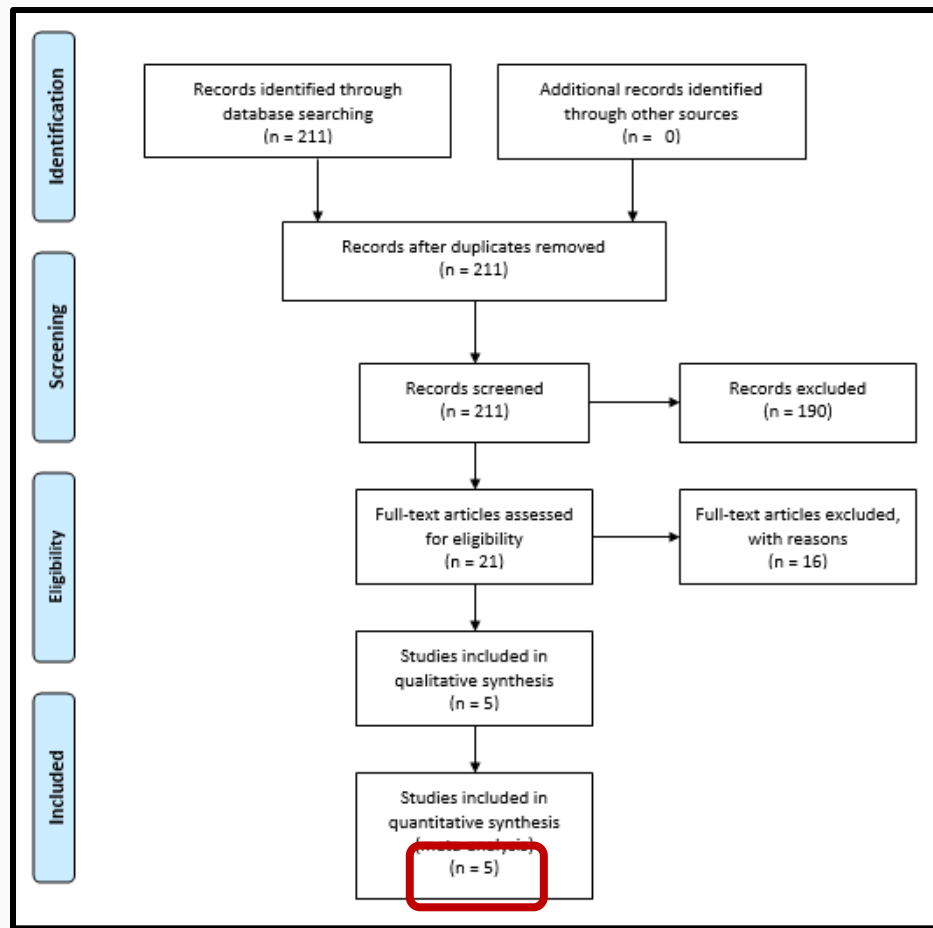
•COMPETENCE OF NURSE SPECIALIST

O

•REHABILITATION, MENTAL HEALTH,
COGNITIVE IMPAIRMENT

- A narrative review was carried out.
- Pubmed, Scopus, Web of Science, and Cumulative Index to Nursing and Allied Health Literature (CIHNAL) were searched.
- The search strategy included combinations and synonyms of free text and MESH (Medical Subject Headings) terms such as

'post-intensive care syndrome' OR 'PICS' OR 'Post-ICU' AND 'follow-up care' AND 'Rehabilitation' OR 'Nursing, Rehabilitation' OR 'Nursings, Rehabilitation' OR 'Rehabilitation Nursings'.

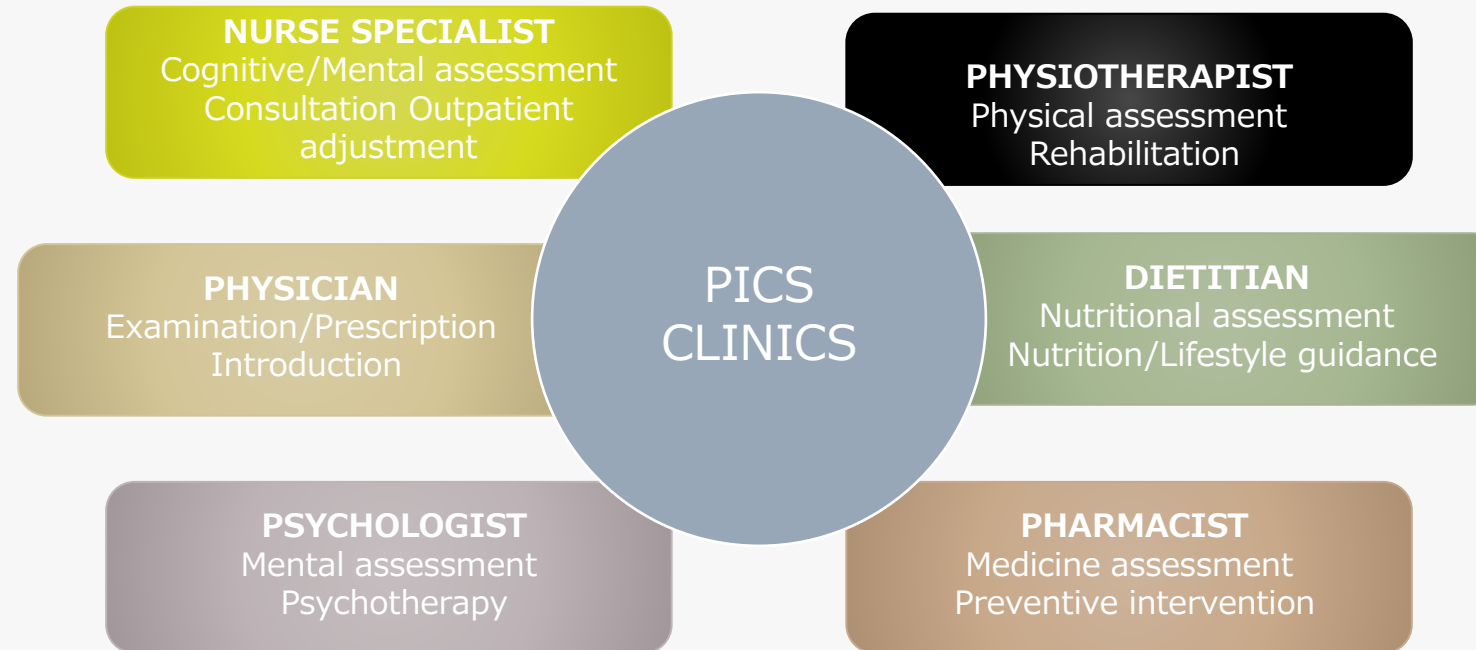


The selection process of studies included



FINDINGS

FINDINGS



Functional Outcomes, Goals, and Goal Attainment among Chronically Critically Ill Long-Term Acute Care Hospital Patients

Randy Dubin^{1*}, Joshua M. Veith^{2,3,4*}, Michael A. Grippi⁵, Joanne McPeake^{6,7}, Michael O. Harhay^{5,8†}, and Mark E. Mikkelsen^{1,9}

¹Department of Speech Pathology, Good Shepherd Penn Partners, Philadelphia, Pennsylvania; ²Department of Pulmonary Medicine, and ³Department of Critical Care Medicine, Respiratory Institute, Cleveland Clinic, Cleveland, Ohio; ⁴Center for Clinical Epidemiology and Biostatistics, ⁵Division of Pulmonary, Allergy, and Critical Care Medicine, and ⁶Palliative and Advanced Illness Research Center, Perelman School of Medicine, University of Pennsylvania, Philadelphia, Pennsylvania; ⁷Glasgow Royal Infirmary, National Health Service Greater Glasgow and Clyde, Glasgow, Scotland; and ⁸School of Medicine, Dentistry and Nursing, University of Glasgow, Glasgow, Scotland

STRESS MANAGEMENT INTERVENTION TO PREVENT POST-INTENSIVE CARE SYNDROME—FAMILY IN PATIENTS' SPOUSES

By Paula L. Collins, PhD, RN; Heather G. Bush, PhD, RN; Kevin E. Rip, PhD; Carmen S. Rodriguez, PhD, MS, ANP-BC, ACCN; Zhan Liang, PhD, RN; and Cindy L. Munro, PhD, RN, ANP-BC

ORIGINAL ARTICLE

High occurrence of postintensive care syndrome identified in surgical ICU survivors after implementation of a multidisciplinary clinic

Samatha E. Bottom-Taxer, Jenelle O. Poynt, PharmD, Maria Y. Louzada, RN, Sara E. Ahmed, LICSW, Abbey Hordunova, PT, DPT, NCS, Edren Poon, PT, Hester M. Rajmou, MD, Shaker Beggs, MD, Benjamin P. Johnson, MD, Anna Lisa Van Kirk, JD, LICSW, Erya Daniels, PE, DPT, Caroline Emoff, LICSW, and Eric J. Mahoney, MD, FACS, Boston, Massachusetts

Block et al. *Crit Care* (2019) 20:203
https://doi.org/10.1186/s13054-019-2527-1

Critical Care

RESEARCH Open Access

Lack of clinically relevant correlation between subjective and objective cognitive function in ICU survivors: a prospective 12-month follow-up study

Emily Brock^{1,2†}, Jacob W. Larson³, Julie Lavelle^{4,5}, Matteo Botta⁶, Tatja Hivikivi⁷, Eva Sandman^{1,8}, Michael Ebenhan⁹, Peter Sackey⁹ and Peter S. Okhuysen¹⁰

A feasibility study of functional status and follow-up clinic preferences of patients at high risk of post intensive care syndrome

K. J. Farley*, G. M. Eastwood†, R. Bellomo†

Implication of Specialized Intensive Care Nurses

- PICS is a widespread experience among ICU survivors and their family members.
- Critical care nurses have a key role in managing the syndrome in follow-up services through the collaboration of the multidisciplinary team

Final tips & take home message

- The PICS clinic is an environment where critical care survivors are assessed through a psychiatric assessment, including self-assessment modules to test physical, cognitive, and mental symptoms.
- Critical care nurses are essential in developing and implementing follow-up treatments
- They play leadership, staffing and developing roles in different post-ICU services

CONTACT

Francesco Gravante, *PhD Student*

University of Rome "Tor Vergata" Department
of Biomedicine and Prevention Rome RM Italy

e-mail:

francesco.gravante@students.uniroma2.it